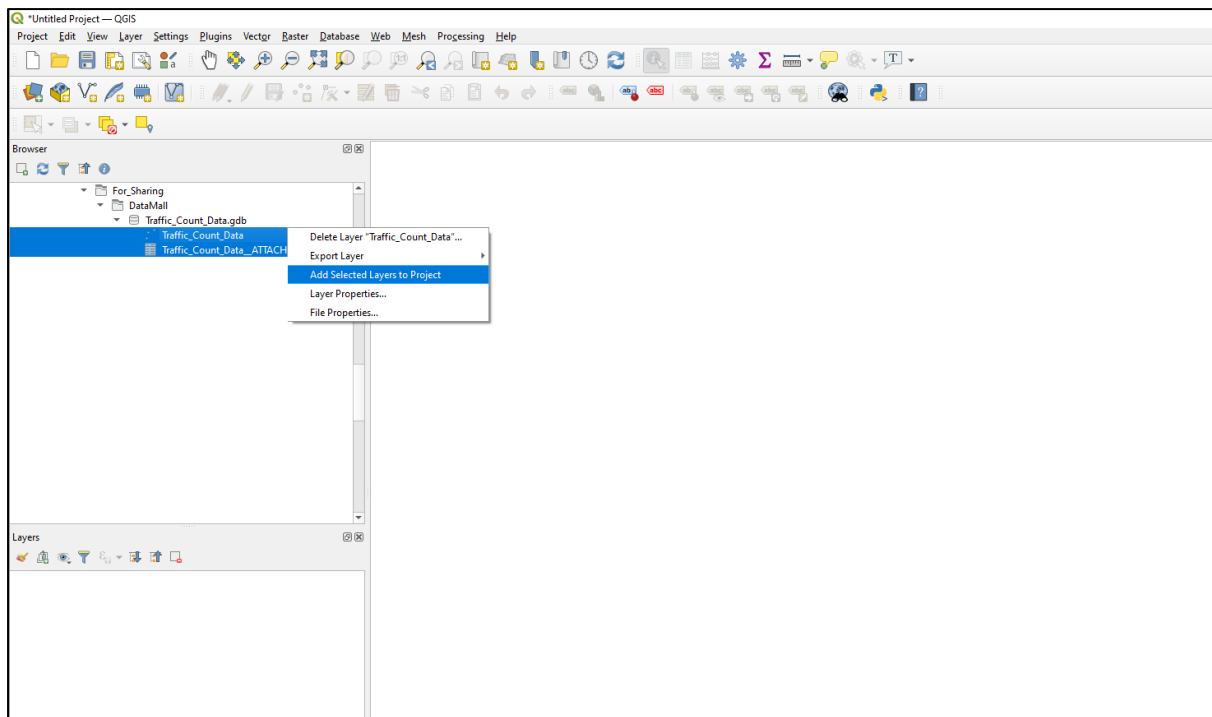
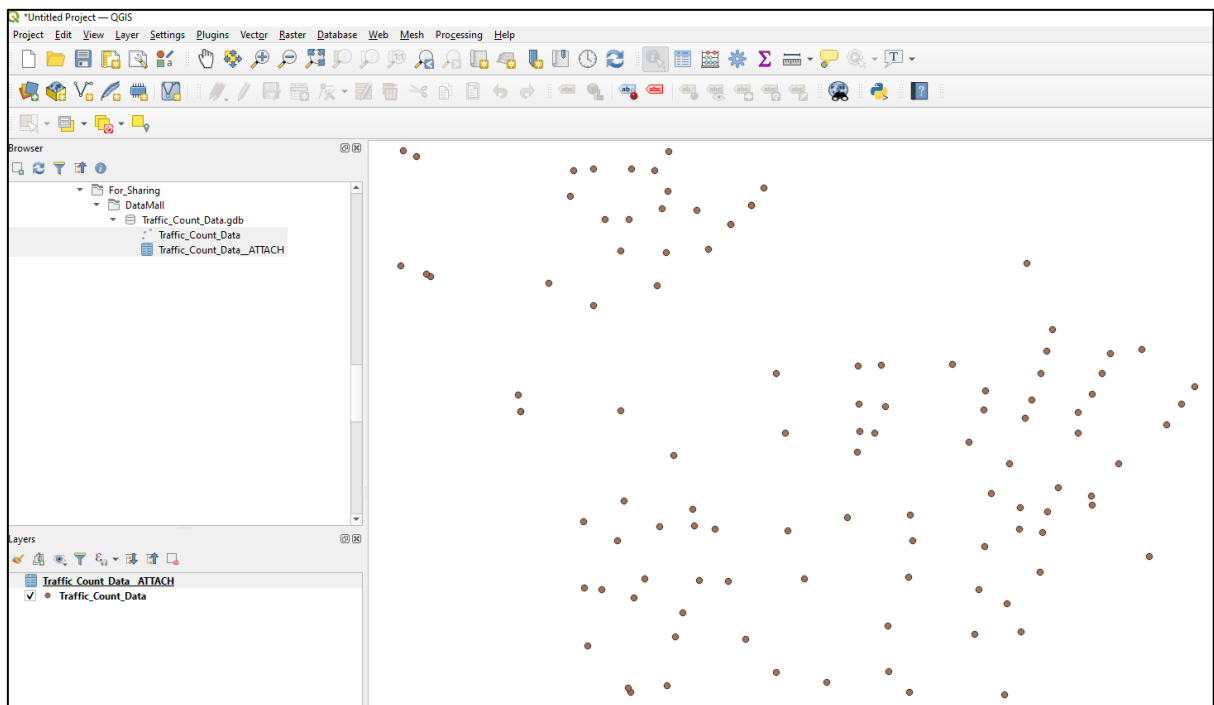


1. Add the layer to QGIS software (as shown below)

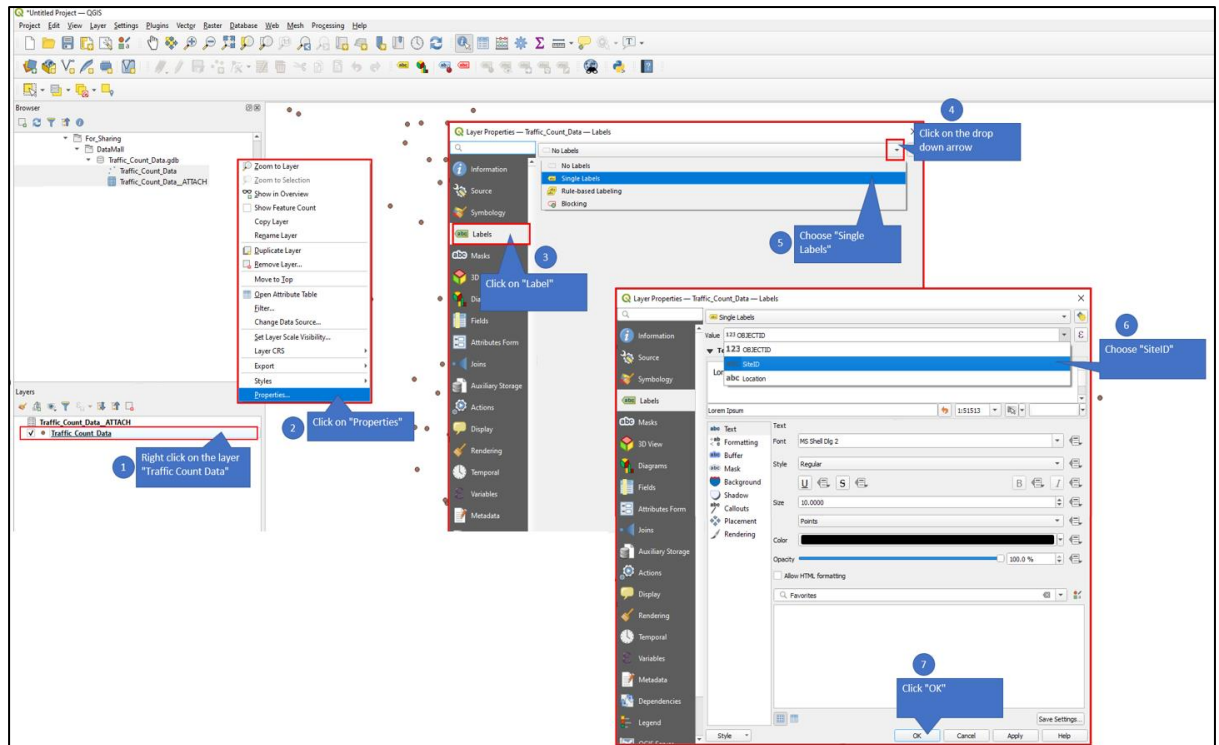


2. Layer added

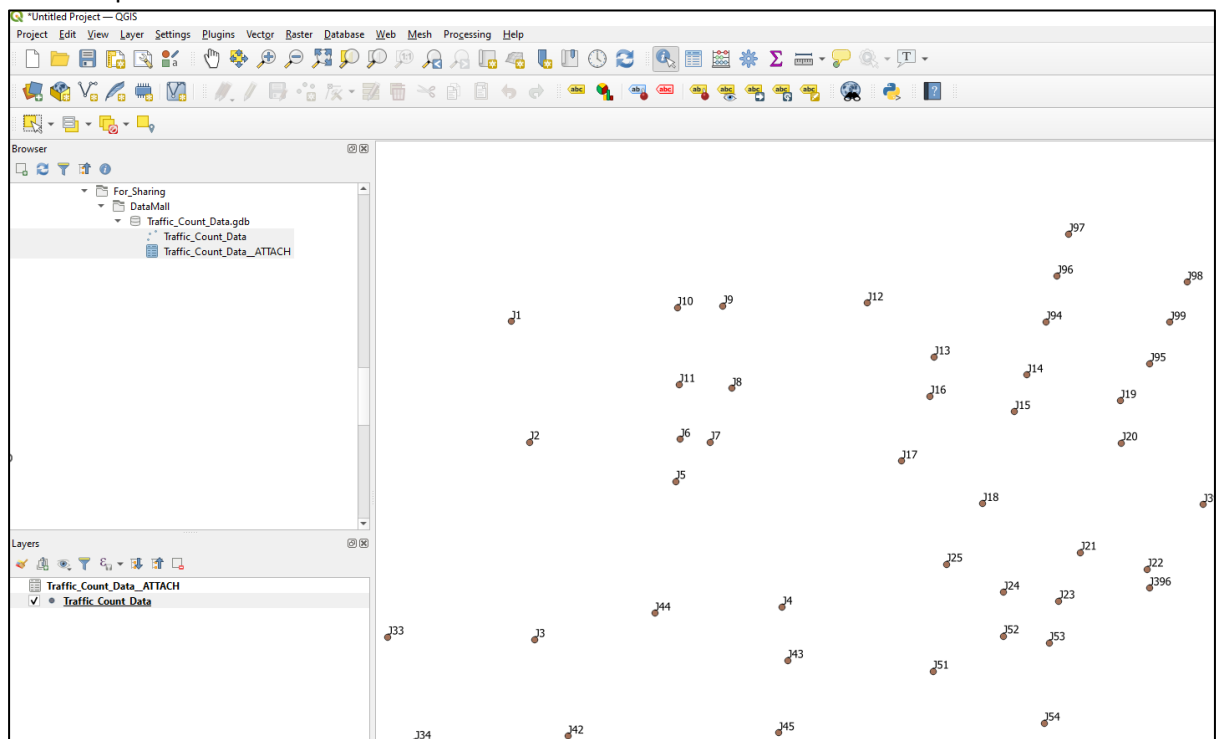
- a. To have a better view, you may consider downloading the "Road Section Line" layer in Data Mall.



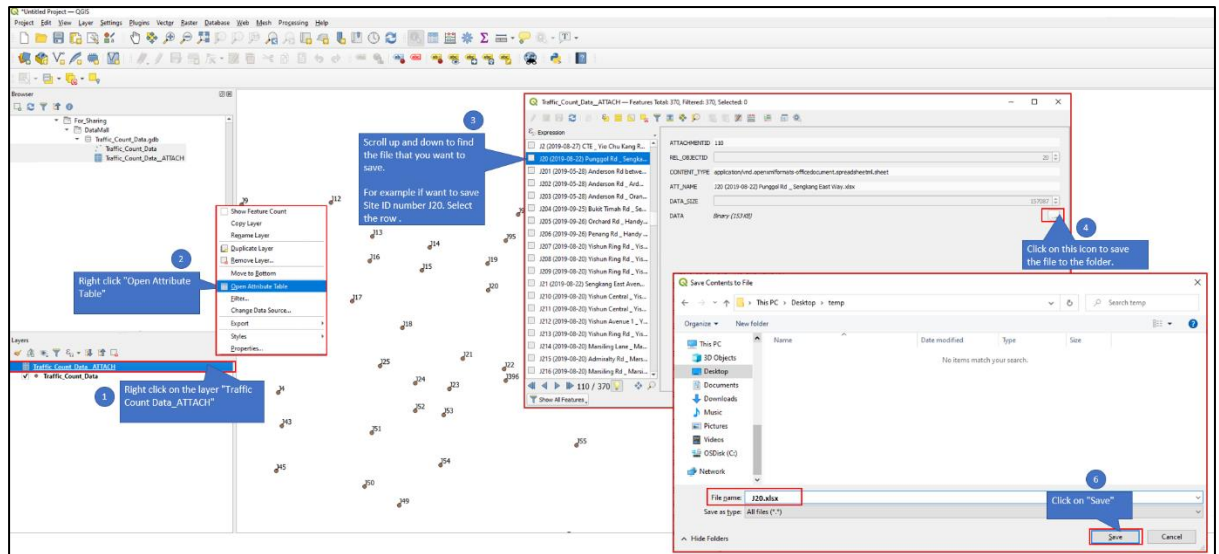
- a. See step 1 to step 7 below



4. Location point labelled



5. Save the data file
 - a. See step 1 to step 6



6. The count data in excel format is now ready to view in your folder.